

### **Item No. 11: Detail specification of the Detector Positioner (One SET)**

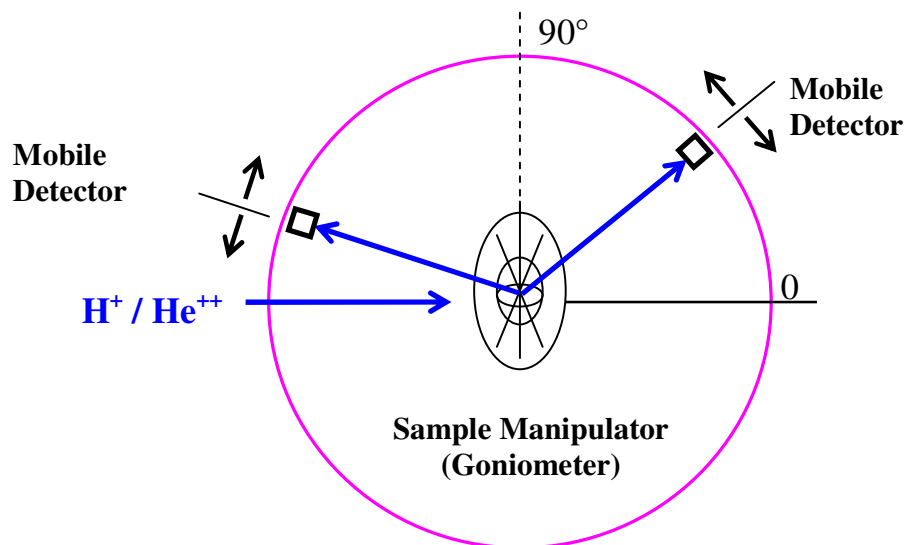
One surface barrier detector will be needed to operate at 0–90° (with respect to the incident beam direction) and the other one will be needed to operate between 90–180° (with respect to the incident beam direction).

Both the detectors should have stepper motor controlled rotation (from out side) with a step resolution of 0.1°. There should not be any backlash in the detector movement. The detector positions (angular) should be easily read from outside the chamber in the form of a digitized display. The detectors should have both manual and computer controlled rotational motion.

The detector positioner should be designed such that the individual detector motion should be independent to each other.

Two cylindrical Teflon detector holders will be needed (exact dimensions will be finalized later) and quoted as optional items.

The height of the detector holders should be designed such that the centres of both the detectors match with the centre of the “Process Chamber” (see Item No. 8) and the Goniometer (as mentioned in Item No.8) centre.



Warranty: Five Years

Service facility: Supplier should mention about the possible service set up and how capable they are to provide after sales service

Pre-installation Requirements: To be supplied by the manufacturer well in advance after the award of the bid.