

Institute of Physics, Sachivalya Marg, Bhubaneswar – 751005, Odisha

Invitation for Expression of Interest (EoI)

Institute of Physics, Bhubaneswar (IOP) invites Expression of Interest for “DEVELOPMENT OF CERTAIN INFRASTRUCTURAL FACILITIES, VIZ, CHILDREN PARK, LAWNS AND GARDENS etc., IN IOP CAMPUS” from experienced Developers/Agencies/Firms with proven track record in the field of Project Planning, Development, and Operation & Maintenance of Similar work in nature. The objective of this assignment is to initially develop and maintain the above facilities for a long term basis.

Expression of Interest should include:

- Concept with design & conceptual drawing.
- Work plan for development and maintenance period.
- Budgetary estimates

Qualified developers shall subsequently go through a competitive bidding process in two bid system.

The EoI (in sealed covers) should be addressed to Director, Institute of Physics, and reach latest by 17:00 hrs of 5th November 2012. The sealed covers need to have superscripted “Development of Children Park, Lawns and Garden”;

The authority reserves the right to accept or reject any or all the offers without assigning any reason thereof.

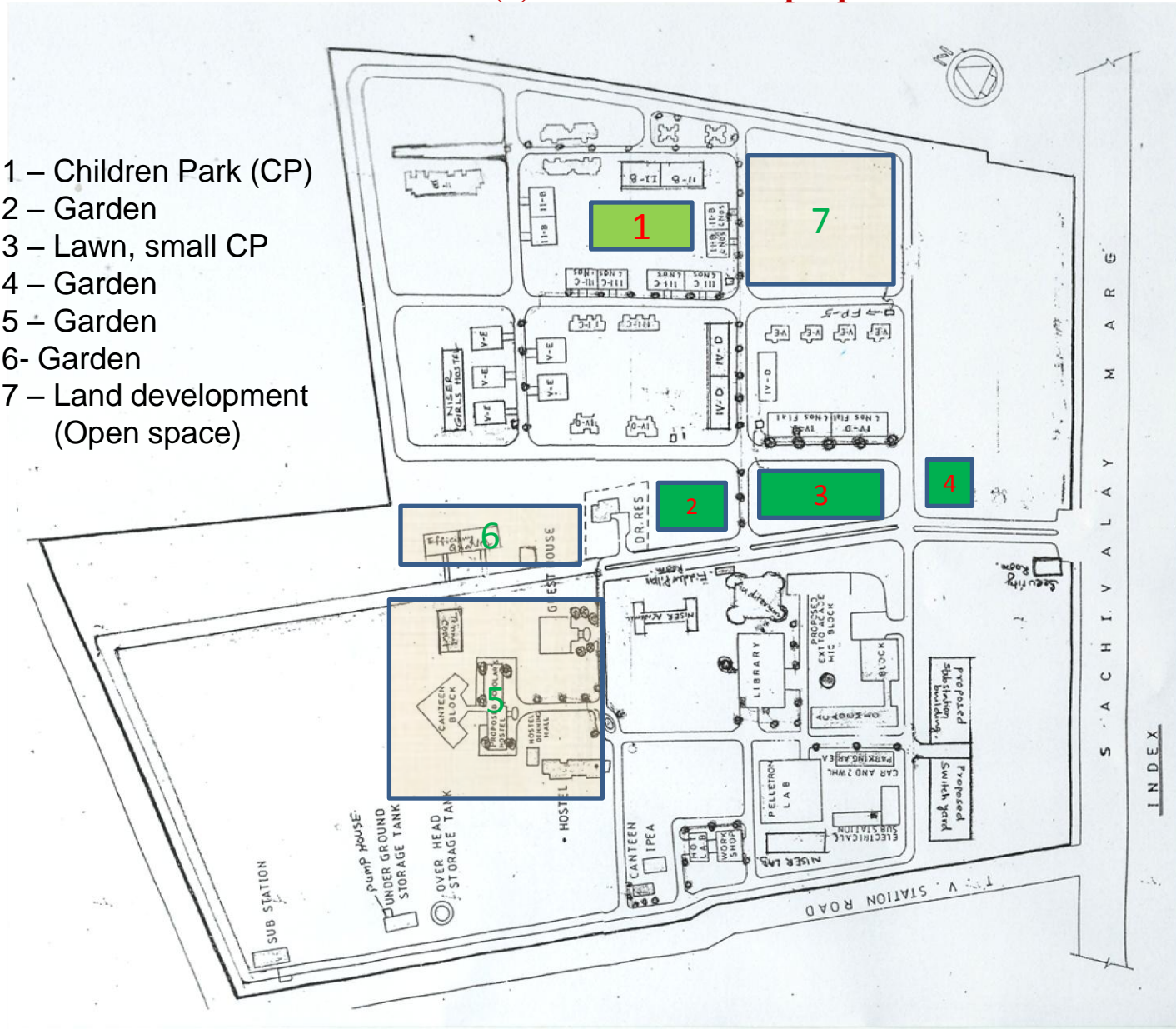
EoI is invited for development of children park, lawns and gardens . A schematic plan of the Institute is shown below (pages 2 – 9) along with legends and shades for various locations along with dimensions, where the proposed work is being carried out. For any further details, you may contact Mr. C. B. Mishra (Registrar), Prof. P. V. Satyam (0674-2306413) and Mr. D. Senapati (94399-23701).

Registrar, Institute of Physics

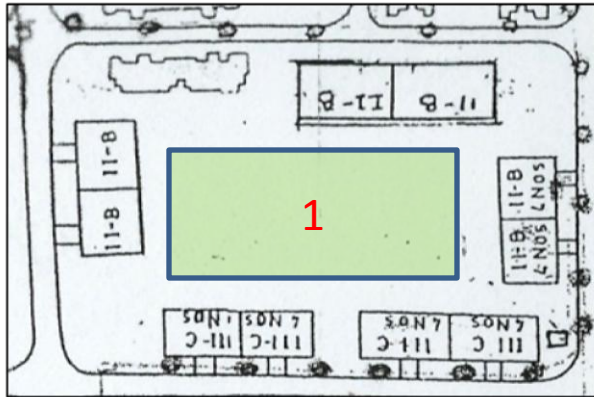
Outline - Proposed Children Park, Lawns, Gardens

Overall there are seven (7) items are in the proposal.

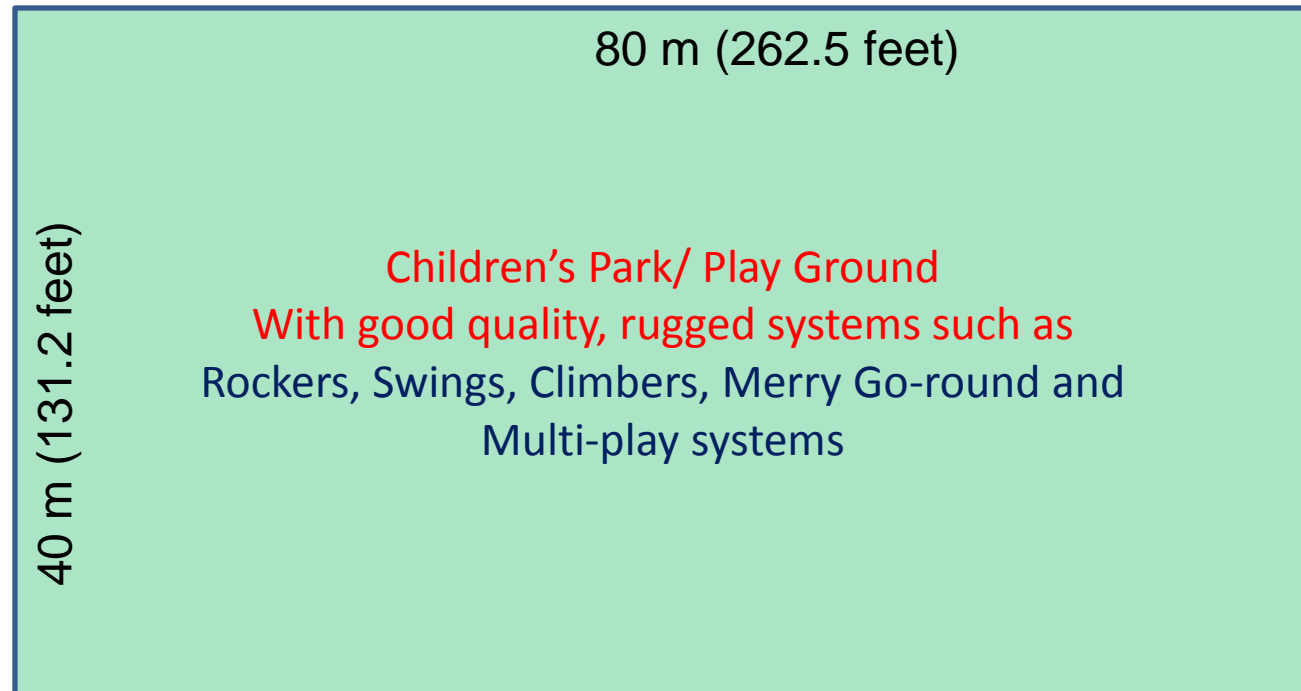
- 1 – Children Park (CP)
- 2 – Garden
- 3 – Lawn, small CP
- 4 – Garden
- 5 – Garden
- 6- Garden
- 7 – Land development (Open space)



Out Line of the Proposed Children Park

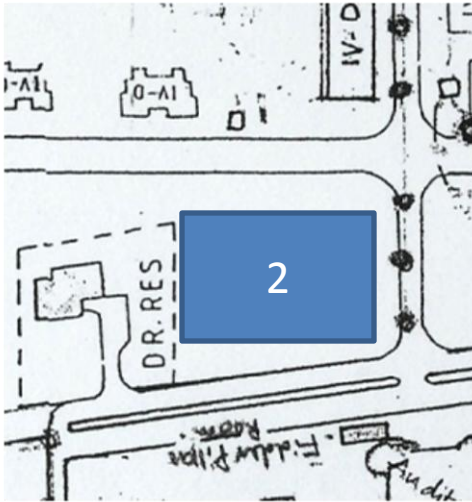


- (a) Damaged and non-functional rides/play tools needs to be removed and new **Rockers, Swings, Climbers, Merry Go-round, and Multi-play Systems** needs to installed.
- (b) The play ground would be used by 50 kids (of all ages up to 16 yrs), majority of the kids would be less than 10 years old.
- (c) Playground needs to be designed in such that safety gets a top priority to eliminate the risk of serious mishaps. Energy conservation, durability, capability to maintain the play ground on long-term basis will be of prime consideration.

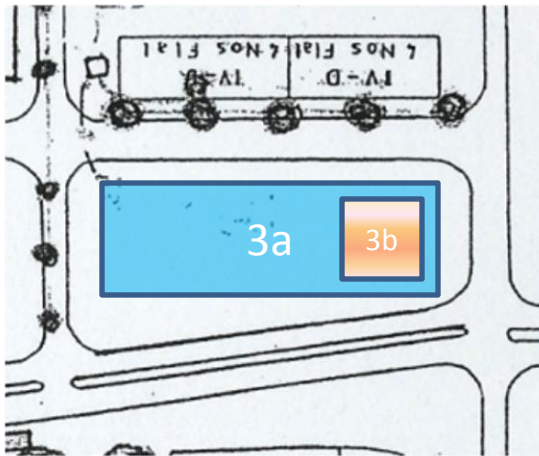


Out Line of the Proposed Garden/Lawn

We would like this place (65 m x 50 m) near the Director's bungalow, to develop as a beautiful Lawn or Garden. A good no. of mango trees are already present and these need to be protected.



Lawn, Garden and kids play for Relaxation...



We would like this place (100 m x 45 m) in front of D-type quarters to develop as a place for sitting on the benches, with small walking trails, filled with flower plants and appropriate grass. Towards the corner (as shown below), we would like to have kids play (only Swings, Rockers and Climbers) as well, while their parents relax in the park.

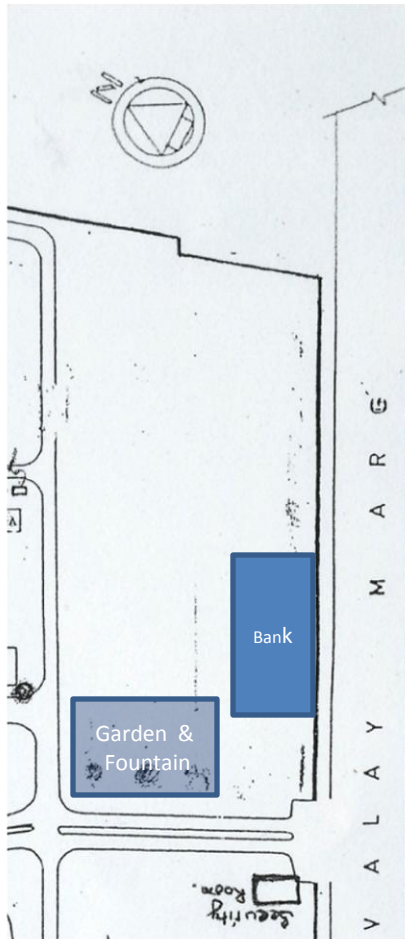
100 m (328 feet)



Lawn/Garden with Fountain

We would like this place (56 m x 41 m x 32 m) near the medical aid center, to convert as a beautiful Lawn or Garden. A good no. of mango trees are already present and these need to be protected. We would like to have a fountain, with appropriate energy saving lights for proper decoration.

56 m (183.7 feet)



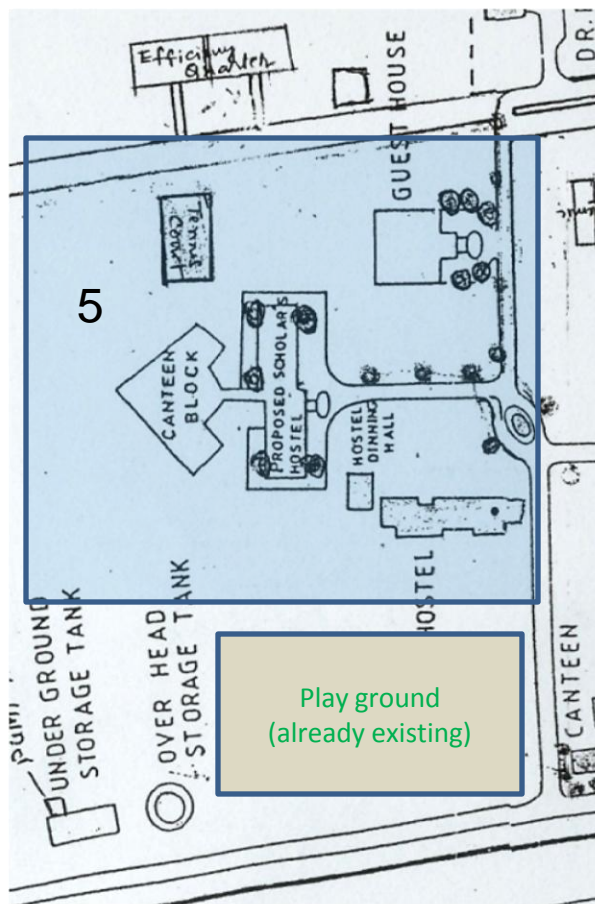
41 m (134.5 feet)

Garden & Fountain

32 m (105 feet)

Hostels, Guest House and Tennis Court

This place (140 m x 120 m) is around the new and old hostel, guest house, tennis court. We have also planted some trees. The larger trees need to be protected and clean environment by having a lawn or garden needs to be developed.



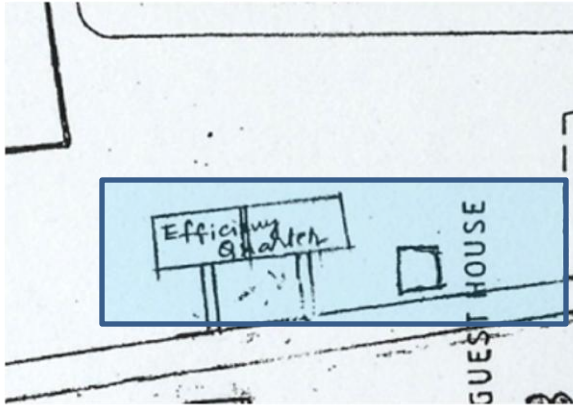
140 m (459.2 feet)

Buildings Existing:

Hostels – Old and New
 New Hostel Mess
 Guest House
 Tennis Court
 Laboratory space (old hostel area)
 Open Space need to be developed.

120 m (393.6 feet)

Efficiency Apartments and Coconut tree garden



We would like this place (120 m x 60 m) around the efficiency apartment needs to be developed with lawn and garden. We have also planted some trees. The larger trees need to be protected and clean environment by having lawn or garden needs to be developed. Present coconut garden needs to be beautified and maintained.

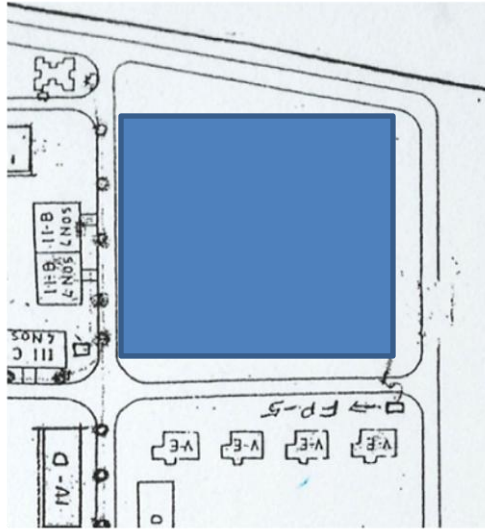
120 m (393.6 feet)



60 m (196.8 feet)

Garden/Lawn

Land Development



We would like this place (110 m x 95.5 m) in the Residential area to develop as a place for social gathering, community functions. The larger trees need to be protected. Also, in the open area needs to be planned for use as outdoor play ground for children of age group 10 – 17 yrs.

110.0 m (418 feet)

Land Development

95.0 m (311.6 feet)